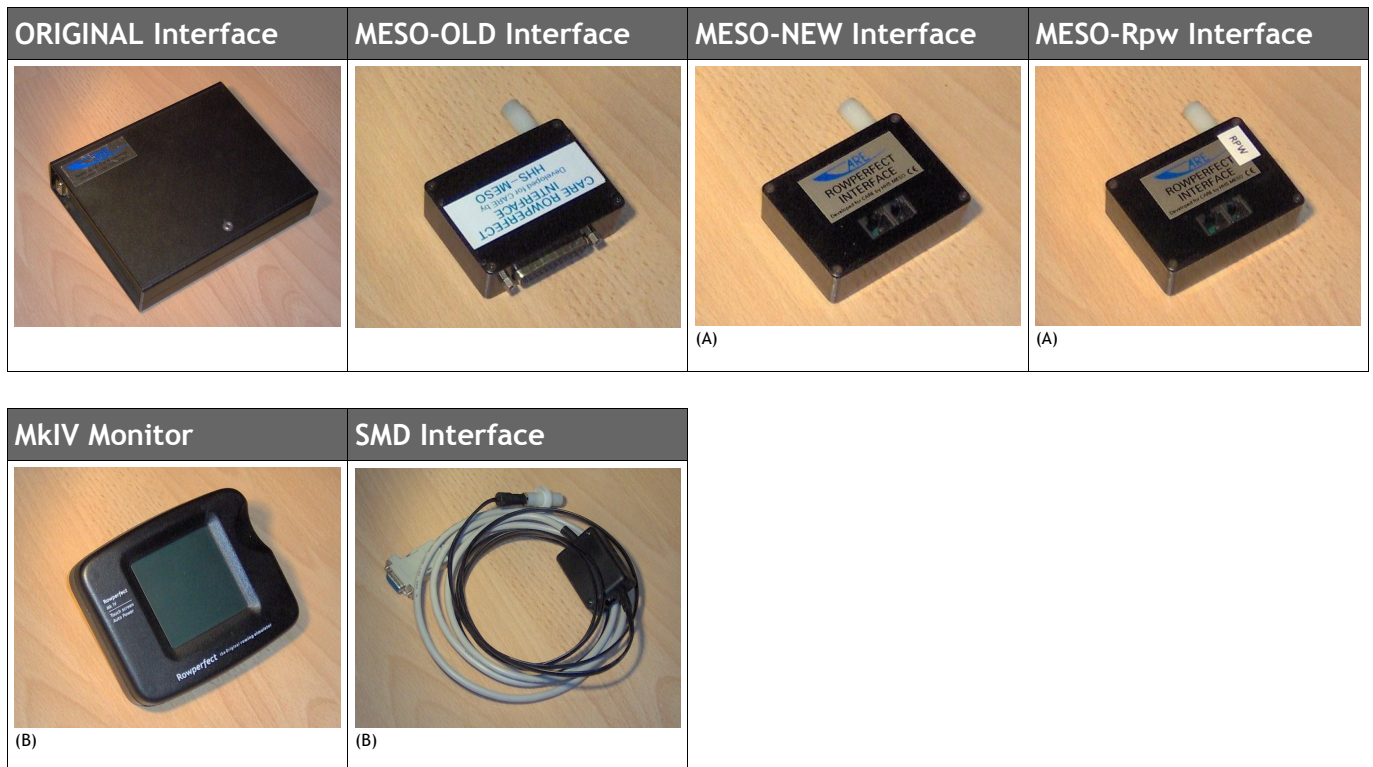


The relation, differences and similarities between CARE/DOS, Rpw and SEAN

Over the years, several different computer interfaces have been developed for the Rowperfect Classic rowing simulator. To read data from these interfaces, four computer programmes are available, each with their distinctive features. This document describes which interface can be used with what programme and it compares the computer programmes options.

Interface types

Set aside a few prototypes, the table below lists all Rowperfect interfaces that have been taken into production:



Notes:

- A. The MESO-NEW and MESO-Rpw interfaces are identical except for the firmware (internal software, not visible from the outside except for a sticker or marker saying “Rpw”). A MESO-NEW interface can be updated to MESO-Rpw by having it re-programmed; this is called the “CARE/DOS Upgrade” or “Rpw Upgrade”. Contact your agent for details.
- B. The MkIV Monitor and SMD interface need special preparation of the Rowperfect to be mounted; this can not be done on all Rowperfect Classic models. Contact your agent for details.

Computer programmes

The four computer programmes for the Rowperfect Classic to date are:

- *CARE/DOS*, the original software for the Rowperfect Classic
- *Rpw* : *Rowperfect for Windows*, the standard Windows software for the Rowperfect Classic (referred to as “Rpw” for the remainder of this document)
- *SEAN* : *Session Analysis* (“SEAN”), the high end recording and analysis software
- *ROSE* : *Row Server* & *NERO* : *Network Row client*, the networked version of SEAN (not discussed in this document)

CARE/DOS

The original DOS based software for the Rowperfect Classic was named CARE. It is the point of reference for all the other programmes. It calculates the basic 16 parameters for each stroke, including a force curve. Data storage is limited and sessions can not extend the (approximately) 45 minutes barrier. CARE/DOS reads data from any interface. The programme runs under DOS (or in DOS mode under Windows 95-98-ME) only. CARE/DOS can be downloaded for free from www.row-ware.com. CARE/DOS has been developed in 1991-1995 and is no longer maintained nor supported.



Rpw : Rowperfect for Windows

Rpw is the Windows counterpart of CARE/DOS for the Rowperfect Classic. Its functionality is based on the features available in the old DOS software, enhanced with some extras. It can read data from a MkIV monitor and MESO-Rpw interface only and has limited - although improved compared to CARE/DOS - analysis possibilities. Rpw comes with the MESO-Rpw interface by default and is part of the “CARE/DOS Upgrade”.

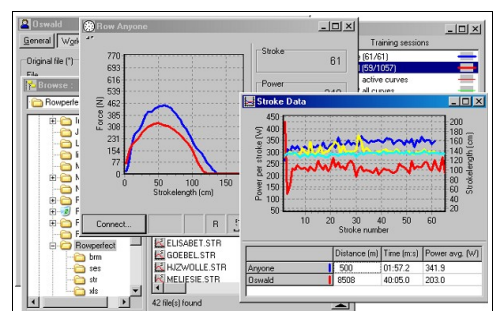


Rpw is also available as a trial version, called RpwT. It has all the features of the standard programme Rpw, and it can read data from the ORIGINAL, MESO-OLD and MESO-NEW interfaces too. By this, owners of one of these old-style interfaces can try Rpw without the need of their interface being re-programmed. RpwT will expire in 1 month after installation. It is intended for testing Rpw only, and not discussed further in this document.

Rpw and RpwT can be downloaded for free from www.row-ware.com. Rpw has been around since 2005 and has reached the maintenance-only state, meaning known problems will be fixed and compatibility for new Windows versions will be strived for, and new features are not likely to be added any more.

SEAN : Session Analysis

SEAN is the “pro” version of Rpw (or Rpw is the “light” version of SEAN, whatever way around), with lots of extra features. SEAN can read data from any kind of interface and offers far more ways for analysing data than its lightweight counterparts. Also, it is highly customisable, both in its user interface as well as using command-line options. SEAN requires a license key to be used for each computer it is installed on. The SEAN programme and a trial license can be downloaded from www.row-ware.com. Development of SEAN has started in 2003 and it has (and is) enhanced and improved on a regular basis ever since.



Feature comparison matrix

The table below summarises the possibilities / features / options for the main three programmes:

Feature	CARE/DOS	Rpw	SEAN
FILES			
• Read/write SES (CARE/DOS Session) files	•	0	•
• Read/write STR (Stroke) files	•	•	•
• Read BRM files	•		•
• Write BRM files			•
• Read/write INI (CARE/DOS User) files	•	•	•
• Write INI files	•	•	•
• Read/write STG (SEAN Training) files		•	•
• Read MkIV (MKS, MKR, MKI) files		•	•
• Read/write SED (SEAN Desktop) files			•
• Write TXT files			•
• Write XLS files			•
• Write FitLog (SportTracks) files			•
• Write MATLAB files			•
• Maximum number of training sessions (files) open at the same time	1	2	unlimited
INTERFACES / RECORDING			
• ORIGINAL interface	•		•
• MESO-OLD interface	•		•
• MESO-NEW interface	•		•
• MESO-Rpw interface	•	•	•
• MkIV Monitor	•	•	•
• SMD Interface	•	•	•
• Read build-in “demo data”		•	•
• Parameters recorded per stroke	16	25	40
ANALYSIS WINDOWS			
• <i>Browse</i> window			•
• <i>Calendar</i> window			•
• <i>Summary</i> window			•
• <i>Intervals</i> window			•
• <i>Stroke data</i> window (“Evaluate screen”)	•	•	•
• <i>Force curves</i> window (“Strokes screen”)	•	•	•
• <i>Session</i> window			•
• <i>Row</i> window (“Main screen”)	•	•	•
• <i>Race</i> window			•
• <i>Splits</i> in the <i>Results</i> window			•
• <i>Splits</i> in the <i>Training</i> window			•
CUSTOMISATION			
• Define training sessions (workout type, limit, ...)	•	•	•
• Customise interface (font, colours, ...)	0	0	•
• Choose parameters /axes in charts	•	•	•
• Set minimum /maximum values for chart-axes			•
• Select columns in the data areas / grids		•	•
• Define window layout (show / hide data area, training list and/or charts)			•
• Set parameter cells in <i>Row</i> window (choose which parameters to show)	•	•	•
• Set advanced parameter cell options (mini-charts, averages)			•



Feature	CARE/DOS	Rpw	SEAN
etc.)			
• Number of parameter cells in <i>Row</i> window	8	8	unlimited
• Number of parameter cells in <i>Session</i> window			unlimited
SPECIALS			
• Auto-save session results			•
• Show markers and averages in charts			
• Calculate average force curve for selected training session		•	•
• Calculate average force curves for all training sessions (4 options)		•	•
• Scale force curves by length and/or force		•	•
• View reference curve in <i>Row</i> window	•	•	•
• View video area in <i>Row</i> window			•
• Text-based <i>Row</i> window for the visually impaired			•
OTHER			
• Operating System	DOS	Windows	Windows
• Targeted audience	Home	Home	Home/Coach /Pro
• Run multiple copies at the same time on 1 PC			•
• Requires license key			•
• Windows Explorer enhancements (tool tips, property sheet)			•
• Internet updater built-in			•

[] does not apply

[o] does partially apply

[•] does apply

Notes on the [o] in the table

- *Rpw* can only read SES files through an intermediate programme named SES2STG.
- In *Rpw*, the colours of the charts can be set; in *CARE/DOS* and *SEAN* also some other colours (background, text etc.) can be set. Furthermore, in *SEAN* both the font and screen layout are user definable too.

Notes on Operating System

- “DOS” in the table means “DOS” or “DOS box under Windows 95/98/Me”.
- “Windows” in the table refers to any Windows version (32 or 64 bit) starting with Windows '95.